



Creating Android Apps That Use Liferay

Extend software solutions based on Liferay Portal platform







Liferay Portal

JSR-286 portal server

empowered with user and group management, web sites, WCM, document management, workflow...



Users	Sites	Apps	Configuration
<ul style="list-style-type: none"> Users and Organizations User Groups Roles Password Policies Monitoring OAuth Admin LCS Admin 	<ul style="list-style-type: none"> Sites Site Templates Page Templates 	<ul style="list-style-type: none"> App Manager Store Purchased Plugins Configuration License Manager Liferay Connected Services 	<ul style="list-style-type: none"> Portal Settings Custom Fields Server Administration Portal Instances Workflow Kaleo Designer SAML Admin

 <p>Tori Forum Vaadin Ltd Communication Free</p>	 <p>Social Login for Liferay</p>	 <p>MapIt Now 3F Consulting Utility Free</p>	 <p>Audience Targeting EE</p>	 <p>Valamis EE - eLearning for Liferay Arcusys Ltd. Productivity €6,450.00 EUR</p>	 <p>Right to Left Language Support EE Liferay, Inc. Utility Free</p>
--------------------------------------------------------------------------------------------------------------------------------------------------------	--------------------------------------------------------------------------------------------------------------------------	---------------------------------------------------------------------------------------------------------------------------------------------------	-------------------------------------------------------------------------------------------------------------------------	--------------------------------------------------------------------------------------------------------------------------------------------------------------------------------------------	------------------------------------------------------------------------------------------------------------------------------------------------------------------------------

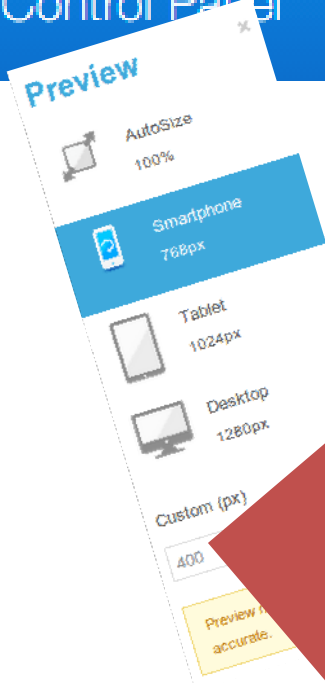
Portlet – functional programatic extension to meet customer needs

Support for mobile devices?

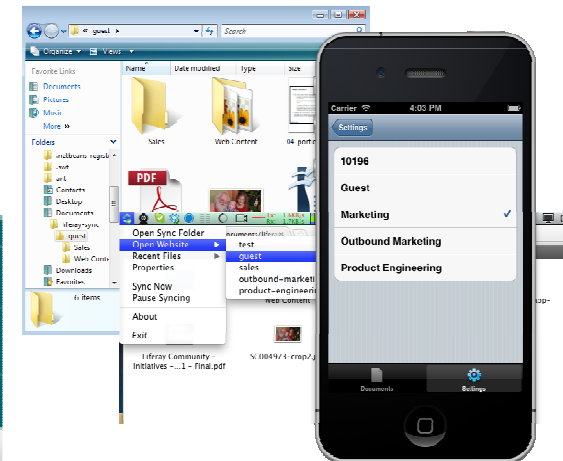


Mobile Devices

- Responsive interface and device aware



- Liferay Sync



NOT ENOUGH

<https://www.liferay.com/products/liferay-sync/features>

Liferay Mobile SDK

- hides implementation specific to platform (service builder) related to JSON WEB Service
- JSON
- OAuth



DEMO Example

1. Get Liferay Mobile SDK

```
git clone git@github.com:liferay/liferay-mobile-sdk.git
```

2. Prepare your plugin for remote access

```
Service.xml, build-service, build-wsdd
```

3. Build Mobile SDK

- configure the SDK Builder properties (set URL, context)
- in SDK root folder run `./gradlew createModule`
- in newly created module root folder run `../..../gradlew jar`
- verify there is `{MODULE_ROOT}/build/libs/liferay-{MODULE_NAME}-android-sdk-1.0.jar`

4. Include and use SDK API in your IDE



Thank you!

Igor Bešlić,

Senior Software Engineer

<https://github.com/igorbeslic>

<https://twitter.com/igorbeslic>

<https://www.liferay.com/web/igor.beslic/profile>

